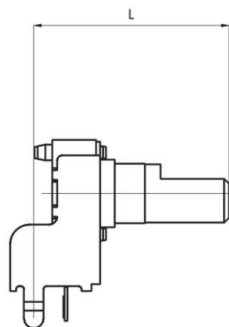
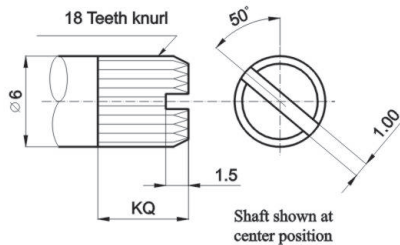


Horizontal

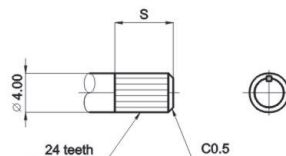


KQ TYPE:



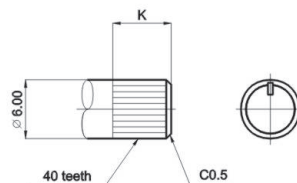
X	Y	Z		
L	15	20		
KQ	7	7		

S TYPE:



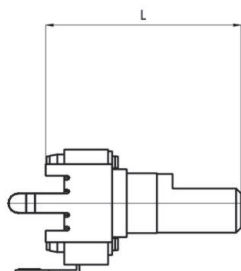
X	K	L	M	N	O
L	15	20	25	30	35
S	7	7	7	7	7

K TYPE:

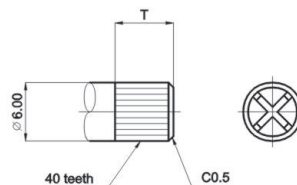


X	Q	R	S	T	U
L	15	20	25	30	35
K	6	7	7	7	7

Vertical

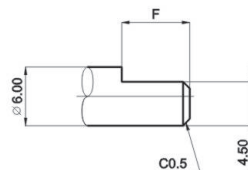


T TYPE:



X	H	I	J		
L	9.5	15	20		
T	-	6	7		

F TYPE:



X	A	B	C	D	
L	15	20	25	30	
F	6	7	12	12	

Total rotational angle 全迴轉角度	280°±5°	
Rotational torque 迴轉扭力	1~8mN.m (10~80gf.cm)	
Rotation stopper strength 止迴轉強度	0.3 N.m (3kgf.cm)	
Push pull strength 軸推拉強度	50N (5kgf)	
Shaft lever wobble 軸搖晃	0.8*L/20mmp-p MAX.	

Electrical characteristics: 電氣的性能

Total resistance 總阻值	5KΩ~500KΩ	1KΩ~1MΩ
Total resistance tolerance 總阻值容許差	±20% (more than 1MΩ±30%)	
Rated power 定格電力	0.05W	0.03W
Max. operating voltage 最高使用電壓	50V AC/20V DC	50V AC (for AC only) 交流專用
Resistance taper 阻值線性	A,B,C	
Residual resistance 殘留阻值	$R \geq 250K\Omega$ 0.1% max. of total resistance $250K\Omega > R > 10K\Omega$ 20Ω max. $10K\Omega \geq R$ 10Ω max.	
Slide noise 滑動噪音	less than 100mV	
Insulation resistance 絕緣抵抗	more than 100MΩ at DC 250V	
Withstand voltage 耐電壓	for 1 minute or more at 250V AC	
Gang error 相互偏差	—	-40~0 dB≤3dB

Durability: 耐久的性能

Rotational life 迴轉壽命	10,000 cycles
-------------------------	---------------